



HY-351:

Ανάλυση και Σχεδίαση Πληροφοριακών Συστημάτων
Information Systems Analysis and Design

Πανεπιστήμιο Κρήτης, Φθινόπωρο 2005

Φροντιστήριο 7

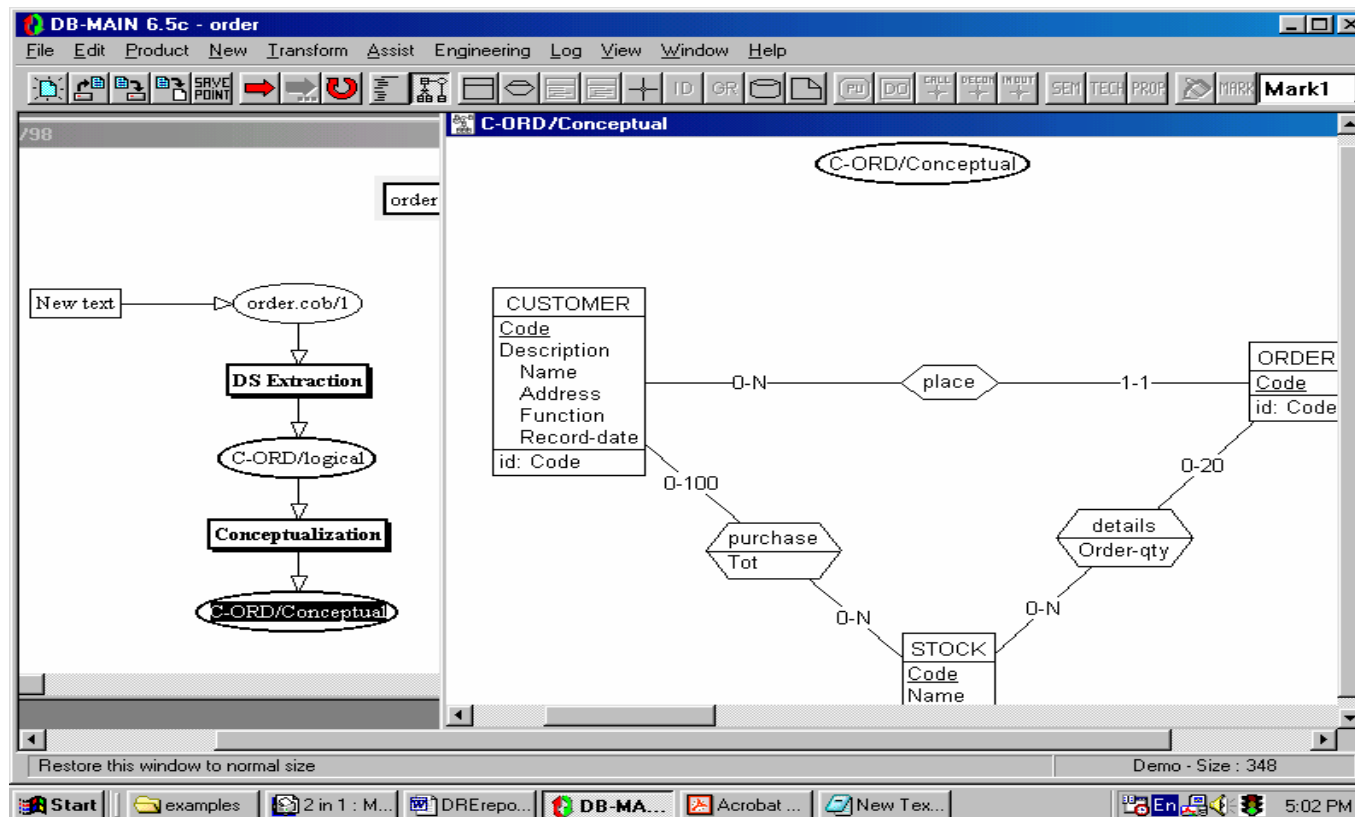
Θέμα : DB - MAIN

Ημερομηνία : 12/12/2005



DB-MAIN

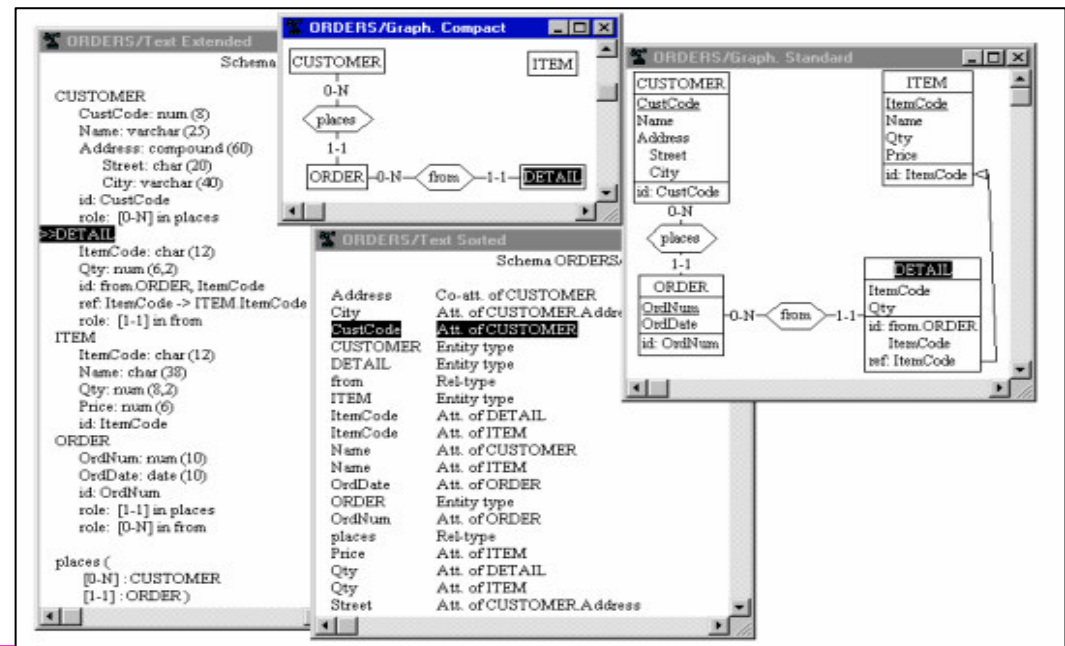
- CASE tool dedicated to database engineering
 - Developed at the University of Namur since 1995
 - Use by universities (education and research) and private companies





• Basic Functions

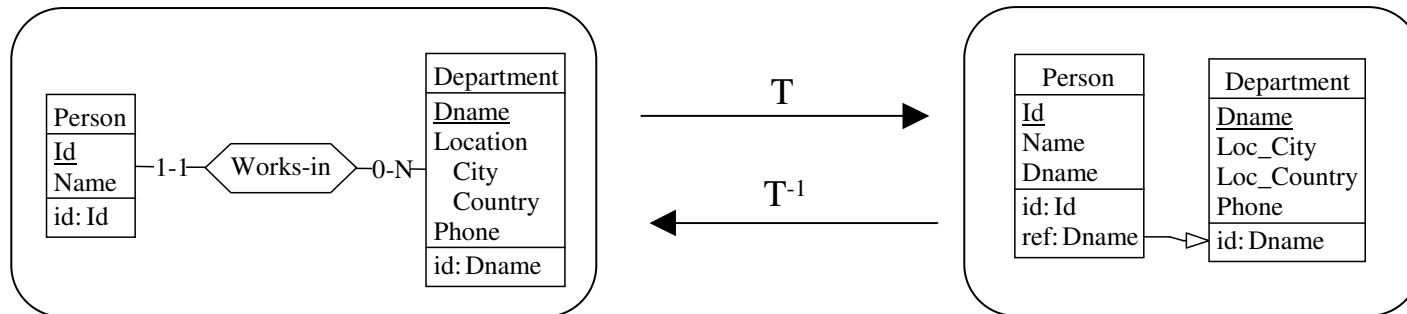
- entering and managing multischema projects
- entering and managing conceptual, logical and physical database schemas, based on ER model or as UML class diagrams
- entering and managing UML activity diagrams
- entering and managing UML use case diagram





• Basic Functions (con't)

- viewing schemas through 7 formats : 4 hypertext and 3 graphical
- deriving logical schemas from conceptual schemas (database forward eng.)
- deriving conceptual schemas from logical schemas (database reverse eng.)
- transforming data schemas
- integrating schemas
- generating executable code according to several DBMS
- generating reports
- creating views





DB-MAIN

Demonstration